




SAMSUNG OMNIA Upgrade

User Manual (Windows XP)

Caution

- The upgrade will erase all the stored data on the device. It is recommended to backup necessary data before starting the upgrade.
- This upgrade is supported only when using the file supplied online and downgrading to the previous software version is not supported. For more details, please contact the Samsung Call Centre.
- Make sure there is no action which could interrupt the upgrade process during the upgrade. (You must not turn off the PC or the device, remove the USB cable or close the application on the PC during the upgrade.)
- The battery must be charged enough to keep the device on until the upgrade is complete (preferably full).
- **IMPORTANT – Interrupting the download in any form may permanently damage your device.**

Requirements

 <p>PC</p>	<ul style="list-style-type: none">- Windows 2000 or windows XP must be installed.- ActiveSync4.5 (or higher versions) must be installed.- It is recommended that the unit be connected to a PC USB port rather than using a USB HUB.
 <p>Samsung OMNIA</p>	<ul style="list-style-type: none">- Make sure battery is charged enough. (More than four blocks in battery icon must be filled.)
 <p>USB data cable</p>	<ul style="list-style-type: none">- USB data cable- Upgrade application downloaded from the website- USB drivers downloaded from the Website

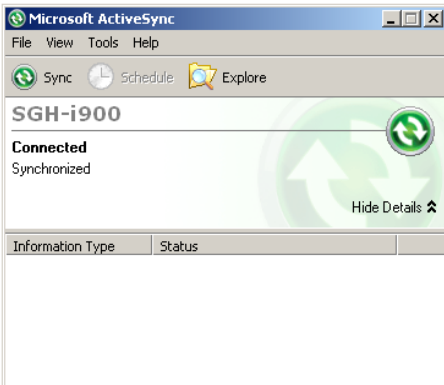
How to Install

Microsoft® ActiveSync® 4.5

1. Install ActiveSync4.5 and USB Driver

A) Download the installation program.
<http://www.microsoft.com/windowsmobile/en-us/help/synchronize/activesync45.msp>

B) Install Samsung Driver
(SAMSUNG_MODEM_4[1].34.zip available on Blog)



2. Connect ActiveSync and backup necessary data

Connect to the PC by using the given USB data cable. (It is recommended to connect directly to the PC USB port rather than via USB hub.)

If the connection fails, please try again after closing any PC firewalls or Anti-Virus programs.

If you still experience issues with ActiveSync, please use the help file or visit the Microsoft website for trouble shooting.

Please make sure that ActiveSync remains connected after finishing data backup.

Please connect to ActiveSync even when a backup of data is not necessary.



UPGRADE

- The upgrade will erase all the stored data on the device. It is recommended to backup necessary data before starting the upgrade.
- Make sure there is no action which could interrupt the upgrade process during the upgrade. (You must not turn off the PC or the device, remove the USB cable or close the application on the PC during the upgrade.)
- The battery must be charged enough to keep the device on until the upgrade is complete
- **Failing to do this may cause permanent damage to your device**



3. Run the application

Run the application that you've downloaded from the Samsung site.

3. Start the Download

Please be patient during the update, do not disconnect the phone or end the application on the PC until the Upgrade is Complete.

Check Both Boxes confirming that you device is switched on and connected to ActivSync and confirm that your battery is fully charged.

Click "Verify Device" to start the download to the handset.

The unit will reboot and the download will commence on reboot.

Once the download to the handset is complete, a pop up message will be displayed "Image upgrade finished successfully". Click OK to reboot the device.

Note: A message will be displayed on the device. **"Pre-configuration, It is necessary to restart the device for changes to take effect"**. The device will automatically restart.

Finish by completing the setup procedure and restoring your data using ActiveSync if you wish.

